

## Modeling Syngas Fermentation for Ethanol Production under Fluctuating Inlet Gas Composition

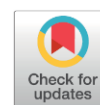
Noviani Arifina Istiqomah<sup>1</sup>, Rendy Mukti<sup>1,2</sup>, Made Tri Ari Penia Kresnowati<sup>1,3\*</sup>,  
Tjandra Setiadi<sup>1</sup>

<sup>1</sup>Department of Chemical Engineering, Faculty of Industrial Technology, Institut Teknologi Bandung, Indonesia

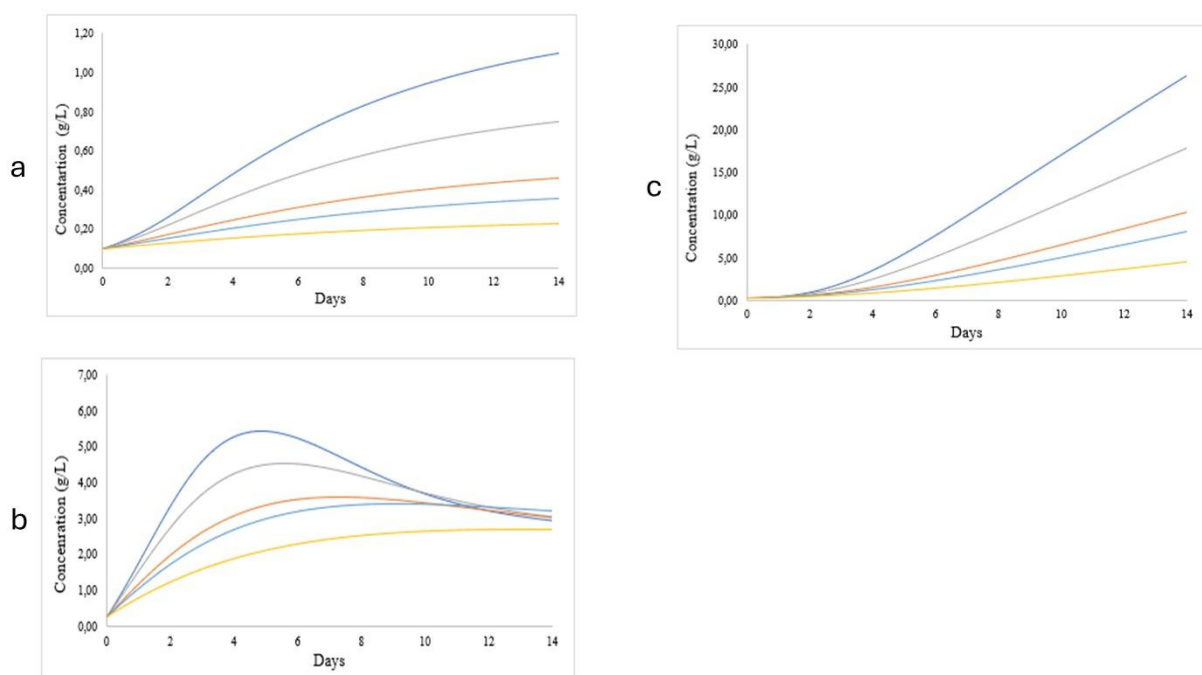
<sup>2</sup>Department of Chemical Engineering, Faculty of Engineering and Agricultural, Universitas Setia Budhi Rangkasbitung, Indonesia

<sup>3</sup>Department of Food Engineering, Faculty of Industrial Technology, Institut Teknologi Bandung, Indonesia

Received: 17<sup>th</sup> March 2025; Revised: 18<sup>th</sup> April 2025; Accepted: 21<sup>th</sup> April 2025  
Available online: 24<sup>th</sup> April 2025; Published regularly: August 2025



SUPPORTING INFORMATION DOI: <https://doi.org/10.9767/bcrec.20369>



The effect of inlet syngas composition on syngas fermentation performance in batch bioreactor: (a) Biomassa, (b) Acetic Acid, (c) Ethanol.

Run A, Ratio H<sub>2</sub>/CO 0.36, CO 55%: — , as a standard

Run B, Ratio H<sub>2</sub>/CO 0.69, CO 36%: —

Run C, Ratio H<sub>2</sub>/CO 0.60, CO 25%: —

Run D, Ratio H<sub>2</sub>/CO 2.16, CO 19%: —

Run E, Ratio H<sub>2</sub>/CO 1.0, CO 12%: —